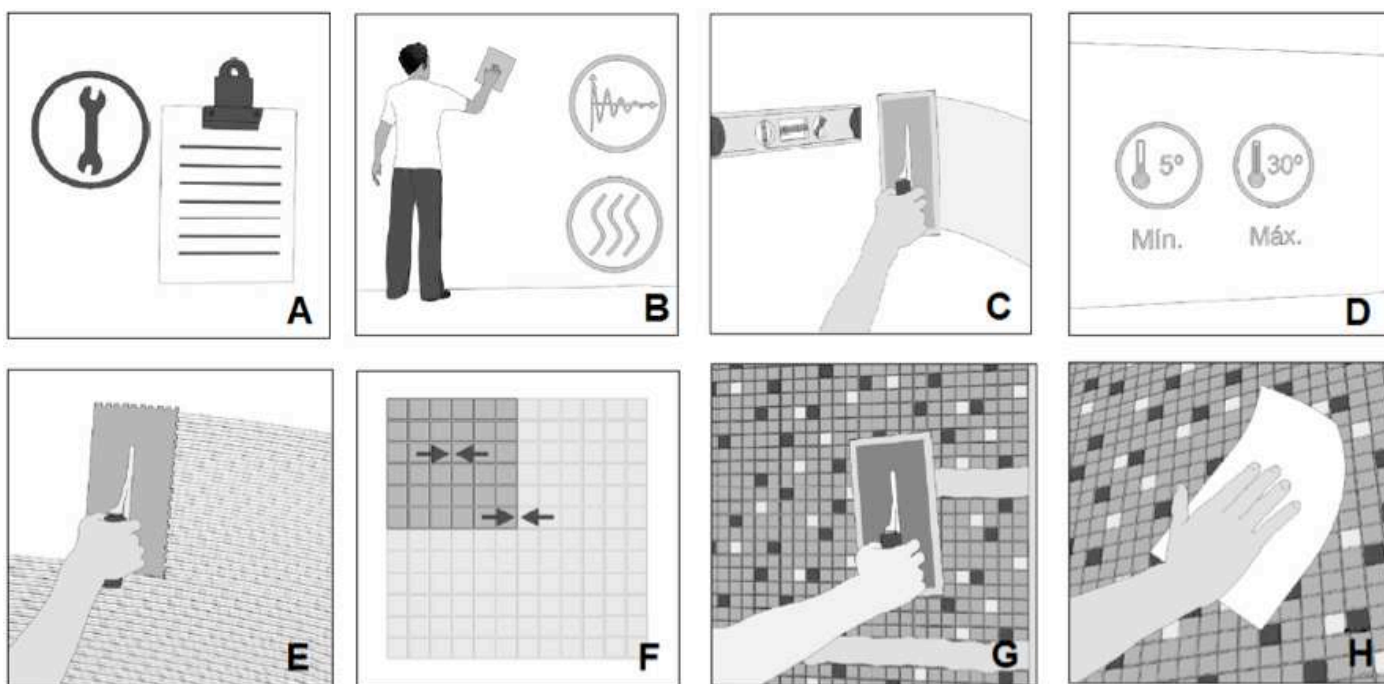


INSTALLATION INSTRUCTIONS

Glass Mosaics



**1.IMPORTANT INFORMATION PLEASE READ BEFORE BEGINNING INSTALLATION**

IT IS VERY IMPORTANT to read and thoroughly understand the information contained in these guidelines before commencing installation, since improper installation, use or maintenance may invalidate the manufacturer's warranty. The following are the responsibility of the installer:

Carefully inspect ALL materials before installation to check there are no defects. The warranty does not cover materials installed with visible defects.

-If you are not satisfied with the materials before installation, please contact your retailer. DO NOT INSTALL.

-We recommend a final inspection is made to examine the colour, finish, style and quality BEFORE installation.

-Check all materials are correct. We cannot be held responsible for any expenses incurred once pieces with visible defects have been installed.

-It is the responsibility of the installer and owner to ensure that working conditions and the working area on site are acceptable before installing any materials.

The best way to achieve a pleasing finish is to create a panel on the floor, combining various mosaic shades prior to positioning these on the wall. Installation assumes acceptance of the consignment.

**2.SURFACE PREPARATION (B)**

The subfloor or substrate should be solid/compact throughout its entire thickness and surface, with no loose parts which might be easily removed. It should be completely dry and free of dust, grease or any other substance. Do not install on subfloors at risk of rising damp since this could compromise the installation. In addition, check that it is suitably plumb and level with no deviation in flatness greater than 2mm, measured using a 2m straightedge. In the case of any deviations greater than 2mm, we recommend using specific products (C). (For correct installation of levelling products, the ambient temperature should be between 5°C and 30°C (D)). Contraction joints in screeds may be filled with flexible materials. Construction joints must be clear.

**3.SPECIFICATION FOR INSTALLING MOSAICS**

**3.1.General**

Materials used in the installation include mosaic tiles and fixing materials (adhesives and grouts), fillers etc. All of these should be in accordance with the technical specification required for the design, and the manufacturer's guidelines should be followed. A perimeter joint of between 4-6mm is required.

When working with glass, the following safety instructions must be observed. Depending on the work to be carried out, the following tools are recommended:

- For small cuts and clipping, we recommend using special Butech tile nippers for glass mosaic tiles.
- Dry cuts should be made using a SIGMA machine, specifically designed for cutting glass mosaic tiles.
- Whole pieces should be cut with a Butech water-cooled, continuous crown diamond disc tile cutter specifically designed for glass. To prevent breakage, after marking the required cuts on the mosaics or glass with a pencil, use several increasingly deep radial cuts.

- To drill holes in glass tiles to hang mirrors, countertops, wall lights etc., we recommend using the Butech FLEX BHW 1549 VR drill with water supply and diamond drill bits. These drill bits must be water-cooled and are available in various diameters: 6, 8, 10 and 12mm.

Important: Rubber washers must be used to ensure correct fixing and prevent glass breakage.

Small variations are characteristic of handmade mosaics. We recommend checking the pieces prior to installation.

In order to maintain the perfect appearance of pieces with a matt finish, it is essential that special care is taken not to mark the face with adhesive or grout when laying these.

Our interactive catalogue ([www.anticcolonial.com](http://www.anticcolonial.com)) contains details of our mosaic models. The direction of the arrows on the back of each piece show the direction for correct installation.

Check the website [www.anticcolonial.com](http://www.anticcolonial.com) for the recommendations for use of each model.

**3.2.Laying Tiles (E)**

To ensure mosaics are installed correctly, please refer to the technical data sheets on the L'Antic Colonial website [www.anticcolonial.com](http://www.anticcolonial.com) which provide details of recommended adhesives for each model. Please take into account whether the tiles are to be laid in dry or damp areas. (We do not recommend installation in swimming pools.) Depending on the mosaic models, L'Antic Colonial recommends one of the following Butech adhesives

-ONE-FLEX PREMIUM. ONE-FLEX PREMIUM is the latest generation C2 TE S1 type, single-component cement-based adhesive, in accordance with EN 12004, suitable for laying all types of ceramic tiles, mosaics and natural stone on the most common substrates used in construction. Further information and application guidelines on the website <http://www.butech.net>

-SUPER-ONE N is a C2 FTE S1 type, high-performance cement-based adhesive in accordance with EN 12004, which can be walked on after 4 hours. Further information and application guidelines on the website <http://www.butech.net>

-POLITECH PREMIUM. POLITECH PREMIUM is an easy to use and handle R2 T type reactive resin adhesive, in accordance with EN 12004, particularly recommended for maximum bonding strength and deformability. It is suitable for most wall tiles and substrates used in construction. Further information and application guidelines on the website <http://www.butech.net>

Ensure that the distance between each tile sheet is the same as between the mosaics, to create a uniform appearance with all joints the same distance apart (F). The adhesive must be left to dry for 24 hours before grouting.

**3.2.1.Laying Film-faced Mosaics**

Lay the mosaic sheets so that the side with the film is facing the tiler. After laying the sheet, the surface should be pressed down evenly using a rubber trowel, ensuring that the distance between each tile sheet is the same as between the mosaics, to create a uniform appearance with all joints the same distance apart.

When the adhesive has dried sufficiently, remove

the protective film from the surface using a damp sponge. Correct any misaligned mosaics using a small grout spreader. Repeat all the steps until the surface to be tiled is complete. The cement-based adhesive must be left to dry for at least 24-48 hours before grouting. Once the adhesive is dry, use a nylon brush and water to clean the mosaics of any residues, then clean with a damp cloth. Leave to dry before grouting. If necessary, use a stronger cleaning product, testing the surface beforehand to ensure it does not damage the mosaics.

### **3.3.Grouting (Applicable only to mosaic tiles with joints) (G)**

To grout the mosaics correctly, all pieces must be perfectly clean and dust-free. Please refer to the technical data sheets on the L'Antic Colonial website [www.anticcolonial.com](http://www.anticcolonial.com) for details on recommended adhesives for each model. Please take into account whether the tiles are to be laid in dry or damp areas. (We do not recommend installation in swimming pools.) Depending on the mosaic models, L'Antic Colonial recommends one of the following Butech grouts

-COLORSTUK 0-4. COLORSTUK 0-4 is a CG 2 type fine grout, in accordance with EN 13888, for grouting joints up to 4mm. Further information and application guidelines can be found on our website <http://www.butech.net>

-COLORSTUK RAPID N. is a CG 2 type high-performance cement-based grout, in accordance with EN 13888, for grouting joints up to 15mm. Further information and application guidelines can be found on our website <http://www.butech.net>

-COLORSTUK ESPECIAL N. is a CG 2 type very fine grout, in accordance with EN 13888, for grouting joints up to 4mm. Further information and application guidelines can be found on our website <http://www.butech.net>

### **3.4.Cleaning after installation (H)**

Use a sponge or cloth to remove any residues before the adhesive sets. It is essential not to leave the grout to dry excessively as this could make it more difficult to clean the mosaics. This operation must be repeated two or three times until the mosaics are completely clean and the surface thoroughly rinsed using a sponge or cloth.

### **4.MAINTENANCE AND CLEANING**

For daily cleaning we recommend using a glass cleaner or neutral soap and then rinse with plenty of water and dry with a soft clean cloth to prevent scratches and flaking. Using detergents or abrasives as cleaning agents may cause irreversible damage. For any queries, please consult the manufacturer. We recommend to periodically check the state of the mosaic grout according to the use.